



Alcântara - Apartment

TO
RO
4
TARA

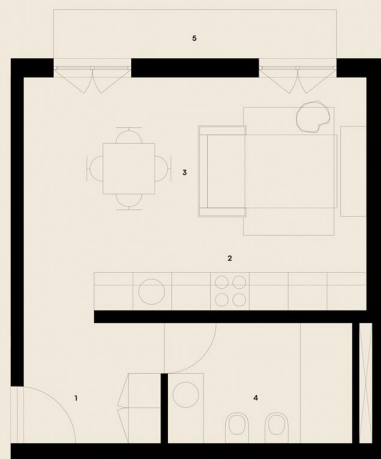


Apartmento 2.2

ESTÚDIO

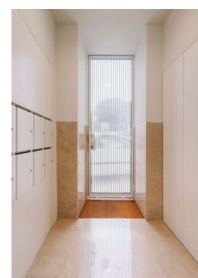
Salão - 5,12 m²
Cozinha - 7,52 m²
Quarto - 16,31 m²
Toilete banheiro - 6,55 m²
Vara - 3,10 m²

TOTAL: 38,60 m²



RIO TEJO

As cotas deste documento são meramente indicativas, e por motivos técnicos, comerciais ou legais, encontram-se sujeitas a eventuais alterações.



1

Bathrooms



39

Area (m²)

305 000 €

(EUR €)

Modern Studio with Balcony – 39 m² – Historic Charm and Modern Layout in Alcântara, Lisbon

BRIGHT FULLY EQUIPPED STUDIO

Ideal for a student, single person, or rental investment.

Available now – Don't wait!

Located on Calçada de Santo Amaro and facing south, Santo Amaro 154 combines traditional architecture with contemporary design. The original façade has been preserved, while the interior features modern apartments with a minimalist style and elegant finishes. With only 9 unique units, this human-scale project is a rare opportunity to live in Alcântara, a peaceful and authentic



Laura-Lise Baldo

l.baldo@unyk-place.com

T +351 938726115 ² • E info@unyk-place.com

Rua Jornal o Louletano, Edifício Nascer do Sol, Bloco B, Loja 5 B, 8100-533 Loulé
AMI 19927

¹ (Call to national fixed network) | ² (Call to national mobile network)



neighborhood in Lisbon. The building overlooks the Tagus River, just a few hundred meters downhill. This charming studio offers peace, comfort, and brightness.

STUDIO FEATURES

- Total area of 39 m²
- Large 3 m² balcony
- Fully equipped kitchen
- Comfortable interior with clean aesthetics

THE NEIGHBORHOOD – ALCÂNTARA

Blending modernity and tradition, Alcântara offers a unique lifestyle. Close to the Tagus River, museums, schools, green spaces, and beaches, this cosmopolitan area is ideal for both living and investing.

- Lx Factory – 400 m
- Doca de Santo Amaro – 600 m
- MAAT & Belém Cultural Center – < 2 km
- CUF Tejo Hospital – 1 km
- Pestana Palace Hotel***** – 500 m
- Caparica and Carcavelos Beaches – 15 km
- Airport – 10 km

📞 Contact us to schedule a visit and discover this exceptional place in the heart of Lisbon.

Property Features

- Air conditioning
- Proximity: Restaurants, City, Hospital, Public Transport, Schools
- Floors: 2
- Lift
- Solar orientation: South
- Equipped kitchen
- Built year: 2025
- Views: City view, Garden view
- Quiet Location
- Balcony



Laura-Lise Baldo

l.baldo@unyk-place.com

T +351 938726115 ² • E info@unyk-place.com

**Rua Jornal o Louletano, Edifício Nascido do Sol, Bloco B, Loja 5 B, 8100-533 Loulé
AMI 19927**

¹ (Call to national fixed network) | ² (Call to national mobile network)