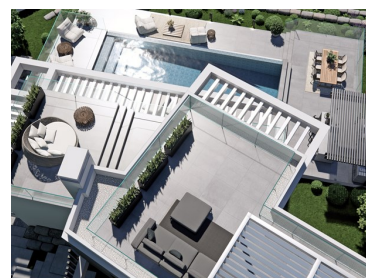




Alcantarilha e Pêra - Villa



3	4	500	1426			1 970 000 €
Bedrooms	Bathrooms	Area (m ²)	Land Area (m ²)	Garage	Swimming Pool	(EUR €)

Stunning Contemporary Villa – 3-Bedroom, 300 m² – Direct Access to Beach and Amendoeira Golf

EXCLUSIVE LISTING

Pêra, Algarve / Outstanding Investment Opportunity – Exclusive Property, First Deliveries Expected in 2026

Discover this stunning contemporary 3-bedroom villa, ideally located just minutes from the golden beaches of Armação de Pêra and adjacent to the prestigious Amendoeira Golf Resort. Offering an exceptional balance of modern architecture, natural light, and serene outdoor living, this property is a rare gem in one of the most sought-after areas of the Algarve.



Laura-Lise Baldo

l.baldo@unyk-place.com

T +351 938726115 ² • E info@unyk-place.com

**Rua Jornal o Louletano, Edifício Nascido do Sol, Bloco B, Loja 5 B, 8100-533 Loulé
AMI 19927**

¹ (Call to national fixed network) | ² (Call to national mobile network)



THE VILLA

Designed with elegance and comfort in mind, this modern V3 villa boasts a total built area of 300 m², featuring high-end finishes and fluid indoor-outdoor living.

The ground floor welcomes you with a bright entrance hall leading to a spacious open-plan living and dining area, seamlessly connected to the fully equipped kitchen. Large sliding glass doors open onto the garden, providing direct access to the pool area, lounge space, and BBQ zone — ideal for entertaining or relaxing with family and friends.

The villa includes 3 en-suite bedrooms, all with built-in wardrobes and direct access to outdoor areas. The master suite also benefits from a private terrace with open views.

The outdoor area features a private swimming pool, a beautifully landscaped garden, and shaded lounging areas. With clean lines and functional spaces, this villa is the perfect combination of design, comfort, and prime location.

KEY FEATURES

- ☐ Plot size: approx. 1426 m²
- ☐ Built area: 496 m²
- ☐ 3 en-suite bedrooms with built-in wardrobes
- ☐ 4 bathrooms (3 en-suite + guest WC)
- ☐ Fully equipped kitchen with premium appliances
- ☐ Bright open-plan living and dining area
- ☐ Large windows and sliding doors for optimal natural light
- ☐ Private swimming pool and landscaped garden
- ☐ BBQ area and outdoor dining space
- ☐ Private parking on the plot
- ☐ High-quality finishes throughout
- ☐ Pre-installation for air conditioning and underfloor heating

THE AREA – ALCANTARILHA

Located in the prestigious Fazenda Caravela development, this villa offers an exclusive residential environment just 10 km from the beaches of Armação de Pêra. With views over the orange groves and the fairways of the Amendoeira Golf Course, it combines serenity with proximity to all essential amenities.

- ☐ Only 3 minutes by car from Amendoeira Golf Resort
- ☐ Quick access to main road networks
- ☐ Direct connection to A22 and A2 motorways (to Lisbon)
- ☐ 15 minutes from Albufeira Hospital
- ☐ 45 minutes from Faro International Airport
- ☐ Less than 30 minutes from the marinas of Lagos, Portimão, Albufeira, and Vilamoura

HIGHLIGHTS



Laura-Lise Baldo

l.baldo@unyk-place.com

T +351 938726115 ² • E info@unyk-place.com

**Rua Jornal o Louletano, Edifício Nacer do Sol, Bloco B, Loja 5 B, 8100-533 Loulé
AMI 19927**

¹ (Call to national fixed network) | ² (Call to national mobile network)



- Walking distance to Armação de Pêra Beach
- Just 3 minutes from Amendoeira Golf Resort
- Quiet residential area with easy access to amenities
- 15 minutes from major urban centers like Albufeira and Lagoa
- 45 minutes from Faro International Airport
- Ideal for permanent residence, holiday home, or rental investment
- In construction – customisation of finishes available

Whether you're looking for a stylish permanent home, a peaceful holiday retreat, or a solid rental investment, this villa offers a unique opportunity to enjoy the best of the Algarve lifestyle — sun, sea, golf, and tranquillity.

📞 Contact us now to schedule a private visit and fall in love with your future home in the Algarve!

Property Features

- Air conditioning
- Equipped kitchen
- Proximity: Airport, Beach, Golf course, Restaurants, City, Hospital
- Terrace
- Built year: 2026
- Views: Countryside views, Golf views, Garden view
- Double glazing
- Quiet Location
- Uninterrupted views
- Balcony
- Under floor heating
- Pool
- Garden
- Garage
- Floors: 1
- Lift
- Electric garage gate
- Parking space
- Solar orientation: North, South, East, West



Laura-Lise Baldo

l.baldo@unyk-place.com

T +351 938726115 ² • E info@unyk-place.com

**Rua Jornal o Louletano, Edifício Nascido do Sol, Bloco B, Loja 5 B, 8100-533 Loulé
AMI 19927**

¹ (Call to national fixed network) | ² (Call to national mobile network)